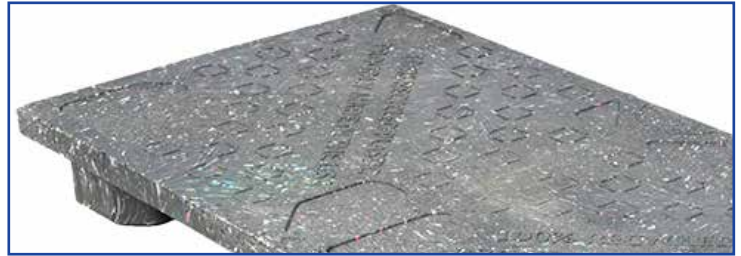


Proteus 48x24

Display Pallet



SPECIFICATIONS	
Item #	114219
Dimensions	48" x 24" x 5.0"
Weight	26.5 lbs
Static (Floor) Capacity	10,000 lbs
Dynamic (Forklift) Capacity	1,800 lbs
Racking (Edge) Capacity ⁽¹⁾	NA
# In A Stack (LTL / FTL) ⁽²⁾	38 / 42
Truckload Qty	1,092
Material	HDPE/PP Recycled



48"x24" footprint ideal for in-aisle or end-of-aisle displays.



Surface indentations allows for secure stacking.

⁽¹⁾Rated racking capacity is for standard edge racking where pallet is only supported by two points at the edges. Racking capacity for other types of racks will be different. Nominal specifications subject to change without notice. Product performance characteristics vary with application.

⁽²⁾# In A Stack: LTL (Less Than Truckload) = is based upon 96" height of standard LTL carriers. FTL (Full Truckload) = is based upon height of standard 53' trailers.



Phone: (800) 827-2474

Website: www.tranpak.com

